



4

INHABITED
BUILDINGS

4

BUILDINGS UNDER
CONSTRUCTION

4

COMMERCIAL
SPACES





35%

GREEN
SPACES



Location

COPIIULUI STREET

-  COPIIULUI PARK/ CIREȘARIII PARK
🚶 1 MIN
-  DOMENII SQUARE
🚶 8 MIN
-  UNIVERSITY/ AGRONOMIC SCIENCES PARK
🚗 4 MIN
-  TRIUMPHAL ARCH
🚗 5 MIN
-  TRIUMPHAL ARCH STADIUM
🚗 5 MIN
-  HERĂSTRĂU PARK
🚗 5 MIN
-  FREE PRESS SQUARE
🚗 6 MIN
-  CHARLES DE GAULLE SQUARE
🚗 8 MIN
-  VICTORY SQUARE
🚗 10 MIN



ARCADIA

Park View

The Domenii neighborhood in Bucharest stands out as one of the quietest and most appreciated residential areas in the capital, standing out for its green landscape and the remarkable architecture of its buildings.



PREMIUM
LOCATION



EASY
TRANSPORTATION



4 PARKS
NEARBY



HEALTHCARE
FACILITIES



EDUCATIONAL
INSTITUTIONS
NEARBY



LIFESTYLE



About

THE PROJECT

Through the quality of the construction and the customer-oriented approach, Arcadia Apartments Domenii represents a landmark in the residential landscape in the capital, strengthening its reputation as a reliable partner and a symbol of excellence in the field.

With each stage, we exceed expectations, offering exceptional quality apartments, and thus a unique lifestyle to our residents.

Our commitment to excellence is reflected in the remarkable quality we offer, creating an environment where residents not only live but also enjoy a refined lifestyle.



Park View

Enjoy an extraordinary experience in the apartments with a spectacular view of the park, where comfort reaches the highest levels

The apartments feature large terraces, specially designed for moments of relaxation in a natural and intimate setting. Comfort and refinement intertwine to offer you a special lifestyle.

ARCADIA PARK VIEW

Facilities

One more reason for you to write your own story in the land of happiness.



CAR ACCESS FROM
COPILULUI STREET



VENTILATED
FACADE



RECEPTION AND
LOBBY AREA



FULLY
UNDERGROUND
PARKING



BICYCLE PARKING/
STORAGE AREA



ELECTRIC CAR
CHARGING



ALUMINUM WINDOW FRAMES
SCHUCO / REYNAERS WITH
TRIPLE GLAZING AND WARM
EDGE BARRIER



APARTMENT *Facilities*



**MULTIZONE AIR
CONDITIONING**
system controlling the variable
flow of refrigerant



**CENTRAL BUILDING
WITH UNDERFLOOR
HEATING**



**FILOMURO TYPE
DOORS**



**FLOATING FLOOR ON
BALCONIES**



**POSSIBILITY OF
SMART HOME
PACKAGE**



**BALCONIES/TERRACES
WITH GENEROUS AREAS
AND GLASS PARAPETS**



2 Rooms

We have created the perfect apartment for you, with a modern design and partition and spacious, bright areas.

The generous and bright spaces are designed to offer a perfect setting, combining utility and elegance in a way that perfectly suits your needs.

2 ROOMS

Soft Symphony

BUILD UP A

83.99 M²

USABLE A

72.46 M²

BALCONY A

14.37 M²

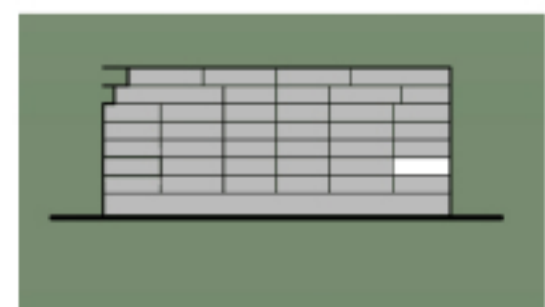
TOTAL BUILD UP A

98.36 M²

- ① ENTRANCE HALLWAY 8.37 sqm
- ② KITCHEN, LIVING AND DINING 39.51 sqm
- ③ BEDROOM 15.01 sqm
- ④ BATHROOM 5.10 sqm
- ⑤ TOILET 3.25 sqm



FLOOR: 2 - 5





3 Rooms

Start your day enjoying spectacular mornings in your new 3-room apartment!

Here, every sunrise becomes a special experience, thanks to the generous glazed spaces that allow the light to enter, amplifying the beauty and elegance of every detail.

3 ROOMS

Morning Light

BUILD UP A

106.65 M²

USABLE A

90.00 M²

BALCONY A

9.66 M²

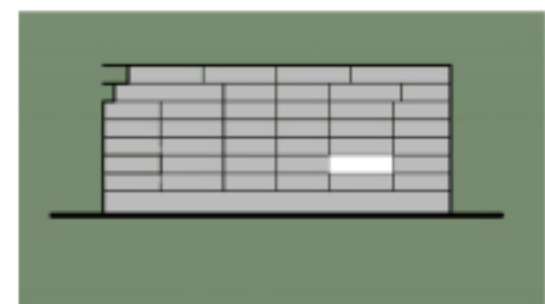
TOTAL BUILD UP A

116.31 M²

- ① ENTRANCE HALLWAY 10.34 sqm
- ② LIVING, DINING AND KITCHEN 30.90 sqm
- ③ HALLWAY 3.78 sqm
- ④ BEDROOM 15.02 sqm
- ⑤ BATHROOM 5.25 sqm
- ⑥ BEDROOM 18.36 sqm
- ⑦ BATHROOM 6.35 sqm



FLOOR: 2 - 5



3 ROOMS

South Haven

BUILD UP A

114.53 M²

USABLE A

94.99 M²

BALCONY A

12.27 M²

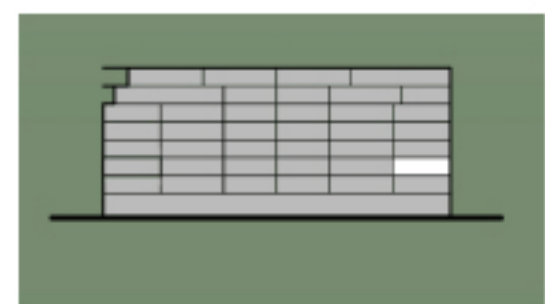
TOTAL BUILD UP A

126.80 M²

- ① ENTRANCE HALLWAY 6.81 sqm
- ② DRESSING 12.34 sqm
- ③ KITCHEN, LIVING AND DINING 36.01 sqm
- ④ BEDROOM 13.52 sqm
- ⑤ BEDROOM 15.63 sqm
- ⑥ BATHROOM 5.95 sqm
- ⑦ BATHROOM 4.72 sqm



FLOOR: 2 - 5





4 Rooms

Elevate your living experience to a new level of refinement in our 4-room apartments.

With delightful views of the park and a perfect balance between elegance and functionality, every corner becomes an oasis of comfort and inspiration.

Discover how you can express your passions in a generous setting, specially created to embrace your new lifestyle.

4 ROOMS

Sunny Days

BUILD UP A

161.93 M²

USABLE A

138.22 M²

BALCONY AND LOGGIA A

26.64 M²

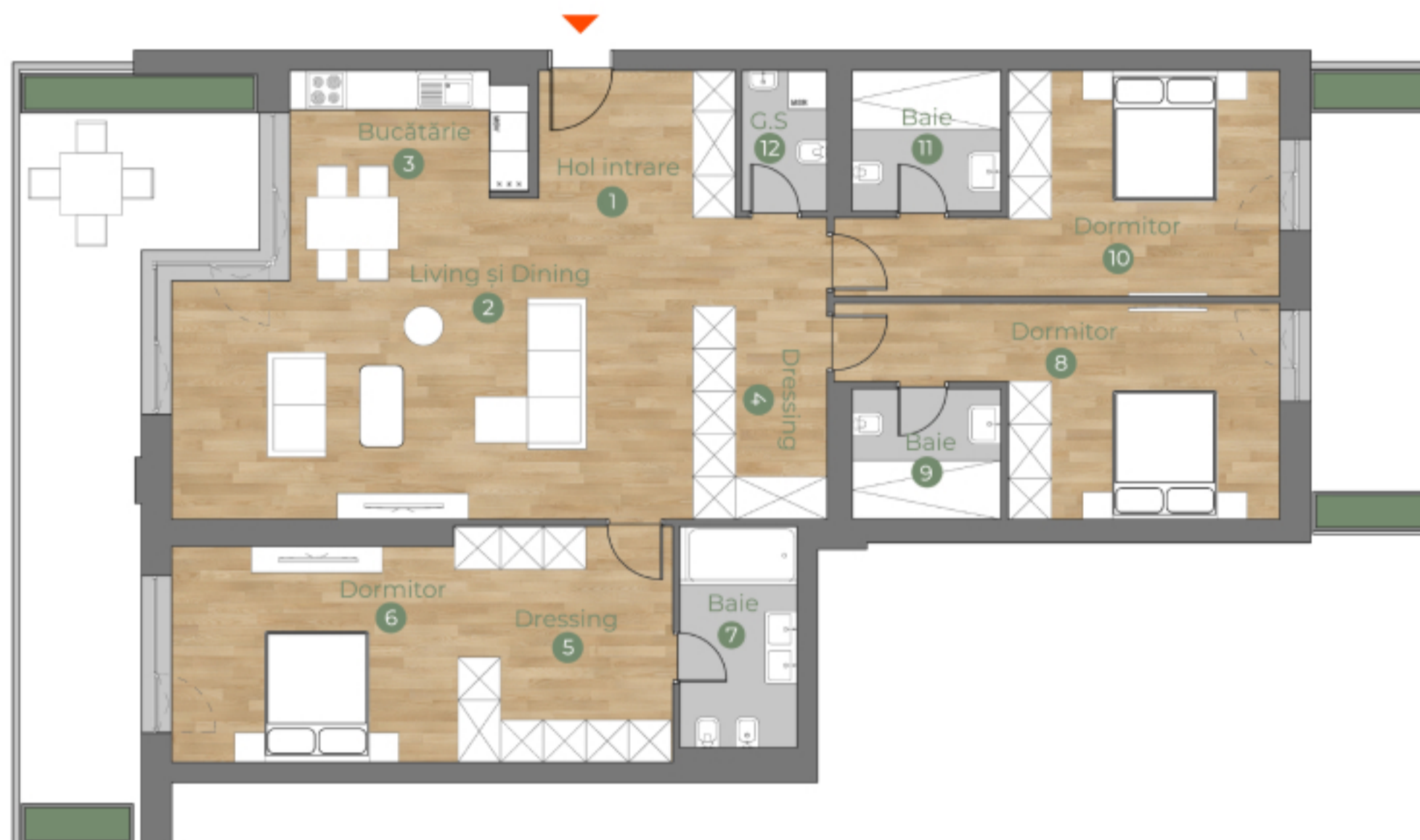
BALCONY A

13.81 M²

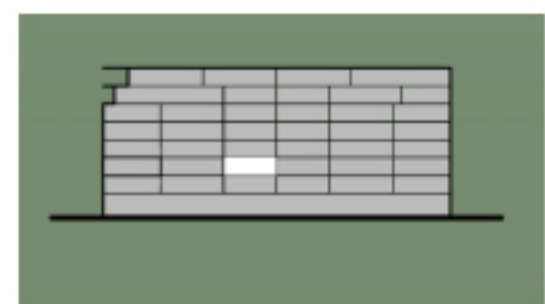
TOTAL BUILD UP A

202.38 M²

- ① ENTRANCE HALLWAY 5.84 sqm
- ② LIVING AND DINING 36.83 sqm
- ③ KITCHEN 10.25 sqm
- ④ DRESSING 6.43 sqm
- ⑤ DRESSING 7.11 sqm
- ⑥ BEDROOM 19.06 sqm
- ⑦ BATHROOM 6.08 sqm
- ⑧ BEDROOM 16.92 sqm
- ⑨ BATHROOM 4.52 sqm
- ⑩ BEDROOM 17.54 sqm
- ⑪ BATHROOM 4.86 sqm
- ⑫ TOILET 2.79 sqm



FLOOR: 2 - 5



4 ROOMS

Green Retreat

BUILD UP A

164.89 M²

USABLE A

136.03 M²

BALCONY AND LOGGIA A

41.62 M²

BALCONY A

12.27 M²

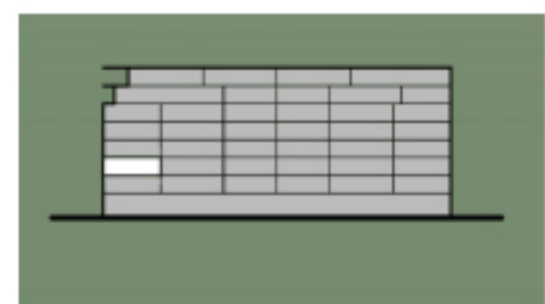
TOTAL BUILD UP A

218.78 M²

①	ENTRANCE HALLWAY	8.43 sqm
②	LIVING AND DINING	35.96 sqm
③	KITCHEN	10.02 sqm
④	DRESSING	3.86 sqm
⑤	BEDROOM	12.96 sqm
⑥	BATHROOM	5.20 sqm
⑦	BEDROOM	14.10 sqm
⑧	BATHROOM	5.10 sqm
⑨	BEDROOM	23.20 sqm
⑩	DRESSING	6.81 sqm
⑪	BATHROOM	7.17 sqm
⑫	TOILET	3.54 sqm



FLOOR: 6 - 7



4 ROOMS

Parkside Sunset

BUILD UP A

177.51 M²

USABLE A

147.50 M²

BALCONY AND LOGGIA A

26.30 M²

BALCONY A

12.02 M²

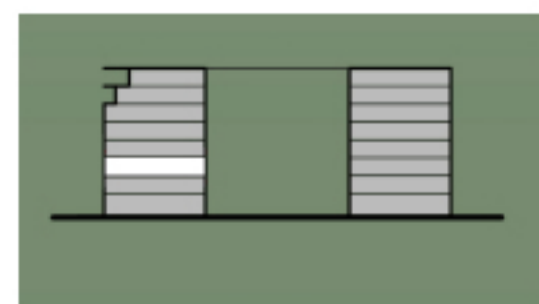
TOTAL BUILD UP A

215.83 M²

①	ENTRANCE HALLWAY	15.32 sqm
②	LIVING AND DINING	42.08 sqm
③	KITCHEN	13.04 sqm
④	DRESSING	11.04 sqm
⑤	BEDROOM	16.50 sqm
⑥	BATHROOM	6.76 sqm
⑦	DRESSING	4.47 sqm
⑧	BEDROOM	13.26 sqm
⑨	BATHROOM	4.80 sqm
⑩	BEDROOM	13.23 sqm
⑪	BATHROOM	5.01 sqm
⑫	TOILET	2.00 sqm



FLOOR: 2 - 5





Penthouse

5 ROOMS

With a spacious and versatile design, the 5-room apartment perfectly fits your living expectations and needs.

From the spacious living room to the well-proportioned rooms and elegant terraces, every aspect of this space reflects a keen attention to detail, giving you an unparalleled living experience

PENTHOUSE 5 ROOMS

Star Apartment

BUILD UP A

187.59 M²

USABLE A

157.97 M²

BALCONY AND LOGGIA A

21.19 M²

BALCONY A

13.81 M²

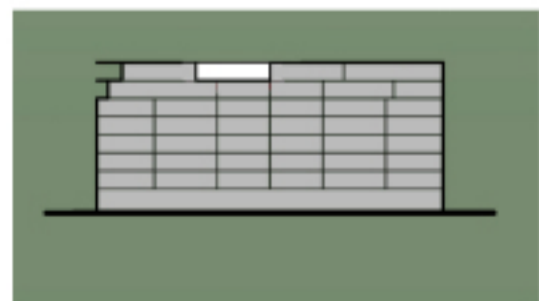
TOTAL BUILD UP A

222.59 M²

① ENTRANCE HALLWAY	4.61 sqm
② LIVING ȘI DINING	33.96 sqm
③ KITCHEN	8.80 sqm
④ DRESSING	7.11 sqm
⑤ BEDROOM	19.06 sqm
⑥ BATHROOM	6.08 sqm
⑦ BEDROOM	17.24 sqm
⑧ BATHROOM	4.61 sqm
⑨ BEDROOM	14.11 sqm
⑩ BATHROOM	4.75 sqm
⑪ BEDROOM	19.24 sqm
⑫ BATHROOM	5.62 sqm
⑬ HALLWAY	9.80 sqm
⑭ TOILET	2.65 sqm



FLOOR: 7





Penthouse

4 ROOMS

A universe that fulfills your dreams: every detail of this apartment is designed to create an atmosphere full of refinement, where the partitions give you the freedom you want, and the abundant natural light in each room perfectly complements any type of design.

PENTHOUSE 4 ROOMS

Harmony Heights

BUILD UP A

200.24 M²

USABLE A

170.20 M²

BALCONY AND LOGGIA A

30.18 M²

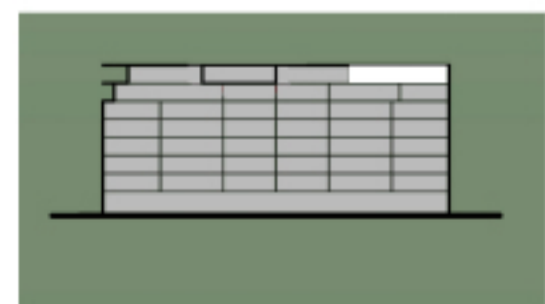
TOTAL BUILD UP A

230.42 M²

- ① ENTRANCE HALLWAY 14.48 sqm
- ② LIVING AND DINING 58.96 sqm
- ③ KITCHEN 12.44 sqm
- ④ BEDROOM 19.66 sqm
- ⑤ BATHROOM 9.06 sqm
- ⑥ LAUNDRY ROOM 4.95 sqm
- ⑦ HALLWAY 5.91 sqm
- ⑧ BEDROOM 15.95 sqm
- ⑨ BATHROOM 5.19 sqm
- ⑩ BEDROOM 18.68 sqm
- ⑪ BATHROOM 4.94 sqm



FLOOR: 7





Penthouse

DUPLEX STYLE

Experience the highest level of sophistication in our architectural gem: the duplex penthouse

The grandeur of the interior space blends harmoniously with a generous terrace, offering a spectacular view of the park.

Discover the advantages of high living, where the elegance of space accentuates every aspect of your personal fulfillment.

PENTHOUSE DUPLEX STYLE

The Golden Park View

BUILD UP A

321.03 M²

USABLE A

259.55 M²

BALCONY AND LOGGIA A

37.09 M²

TERRACE A

59.12 M²

TOTAL BUILD UP A

417.24 M²

① HALLWAY	10.27 sqm
② LIVING ROOM	24.04 sqm
③ HALLWAY	4.70 sqm
④ BEDROOM	15.73 sqm
⑤ BATHROOM	4.70 sqm
⑥ BEDROOM	14.09 sqm
⑦ DRESSING	13.07 sqm
⑧ BATHROOM	5.73 sqm
⑨ BEDROOM	18.77 sqm
⑩ DRESSING	6.76 sqm
⑪ BATHROOM	8.02 sqm
⑫ LAUNDRY ROOM	6.70 sqm
⑬ ENTRANCE HALLWAY	8.02 sqm
⑭ DRESSING	11.25 sqm
⑮ LIVING AND DINING	79.49 sqm
⑯ KITCHEN	24.41 sqm
⑰ TOILET	3.81 sqm



FLOOR: 6 - 7



PENTHOUSE DUPLEX STYLE

The Grand Park View

BUILD UP A

347.31 M²

USABLE A

291.57 M²

BALCONY AND LOGGIA A

64.90 M²

BALCONY A

21.93 M²

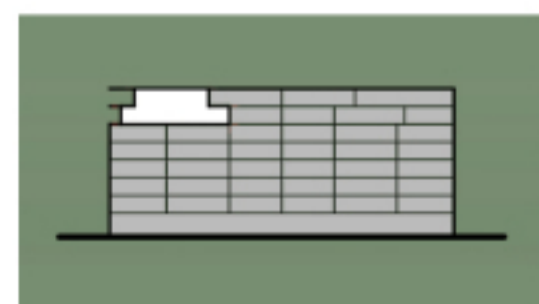
TOTAL BUILD UP A

434.14 M²

- ① LIVING ROOM 34.07 sqm
- ② BEDROOM 24.42 sqm
- ③ DRESSING 8.04 sqm
- ④ BATHROOM 7.54 sqm
- ⑤ DRESSING 22.06 sqm
- ⑥ BATHROOM 6.01 sqm
- ⑦ BEDROOM 18.87 sqm
- ⑧ BEDROOM 19.40 sqm
- ⑨ BATHROOM 6.13 sqm
- ⑩ DRESSING 19.25 sqm
- ⑪ BATHROOM 5.11 sqm
- ⑫ HALLWAY 13.71 sqm
- ⑬ LIVING AND DINING 77.62 sqm
- ⑭ KITCHEN 24.59 sqm
- ⑮ TOILET 4.42 sqm



FLOOR: 6 - 7



ARCADIA

Park View



031 401 11 01



SALES OFFICE

SIRET STREET, BUILDING B3, 2ND ENTRANCE,
FLOOR 1, APARTMENT 3215

MONDAY - FRIDAY : 10:00 - 19:00

SATURDAY : 10:00 - 15:00

Development and sales



CONADI
EXCELLENCE IN REAL ESTATE

®

Conadi Imob Construct SRL, exclusive sales
representative of Arcadia Apartments Domenii.

CONTACT@ARCADIAAPARTMENTS.RO